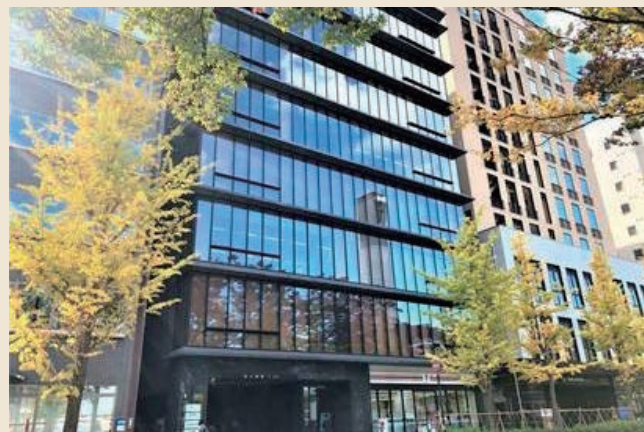


TKP Garden City PREMIUM Kanazawa Station, West Exit

2-13-33 Hirooka, Kanazawa 920-0031
 JR Kanazawa Ekinishi No.3 NK Bldg. 2F/3F
 TEL: 076-225-7892 FAX: 076-225-7893
 URL: <https://www.kashikaigishitsu.net/facilitys/gcp-kanazawa-nishiguchi/>
 E-mail: m-yamashita@tkp.jp



■ Number of seats
8 ~ 136 seats



■ Traffic access
 5-min walk from JR Kanazawa Station, Kanazawa Port Exit (West exit)



■ Hours
 8:00am~10:00pm

■ Date to start accepting reservation
 Beginning of the month one year before the date of use



■ Accommodation
 None



■ Restaurants/Cafés
 None



■ Parking
 None

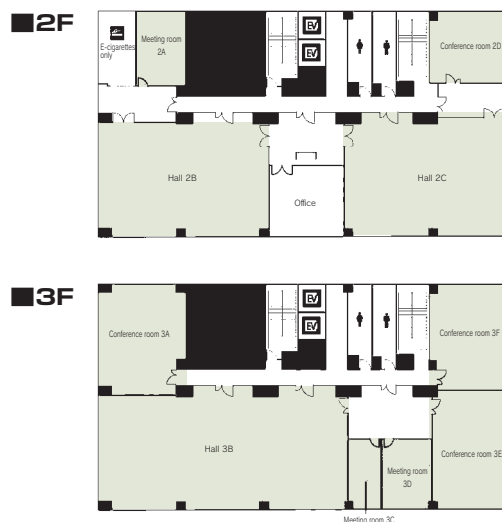


■ Remarks

- Arrangement of equipment
- Receipt and sending of packages
- No need to set up the site and return it to its original state
- Lunch boxes, drinks, arrangement of post-conference party
- Web meeting available (dedicated connection)
- Rental for party only is possible.
- Accommodation can be arranged.

Reservations: 080-4442-9627(Yamashita)

Floor plan



■ Convention site

Site name	Floor	Area(m ²)	Width × Depth (m) (m)	Ceiling height(m)	Capacity (persons)					Remarks
					Fixed seats	School	Theater	Seated	Buffet	
Meeting room 2A	2	25.66	4.1 × 6.6	2.6	—	—	—	—	—	Square-shaped layout (U-shaped or island layout also possible) Please discuss your needs with us.
Hall 2B	2	154.98	9.3 × 15	2.6	—	86	88	54	80	
Hall 2C	2	155.06	9.1 × 15	2.6	—	86	88	54	80	
Conference room 2D	2	43.92	7.5 × 5.4	2.6	—	20	23	—	—	
Conference room 3A	3	65.5	9.7 × 7.5	2.6	—	32	33	—	—	Island-style (capacity: 8 people)
Hall 3B	3	226.99	9.2 × 22	2.6	—	136	120	72	96	
Meeting room 3C	3	16.72	2.9 × 6.2	2.6	—	—	—	—	—	
Meeting room 3D	3	21.56	4.3 × 6.2	2.6	—	—	—	—	—	
Conference room 3E	3	71.66	7.1 × 10.4	2.6	—	40	47	24	32	
Conference room 3F	3	66.67	6.6 × 9.3	2.6	—	32	33	—	—	

Width × Depth and the floor area may not match depending on the shape of the room.