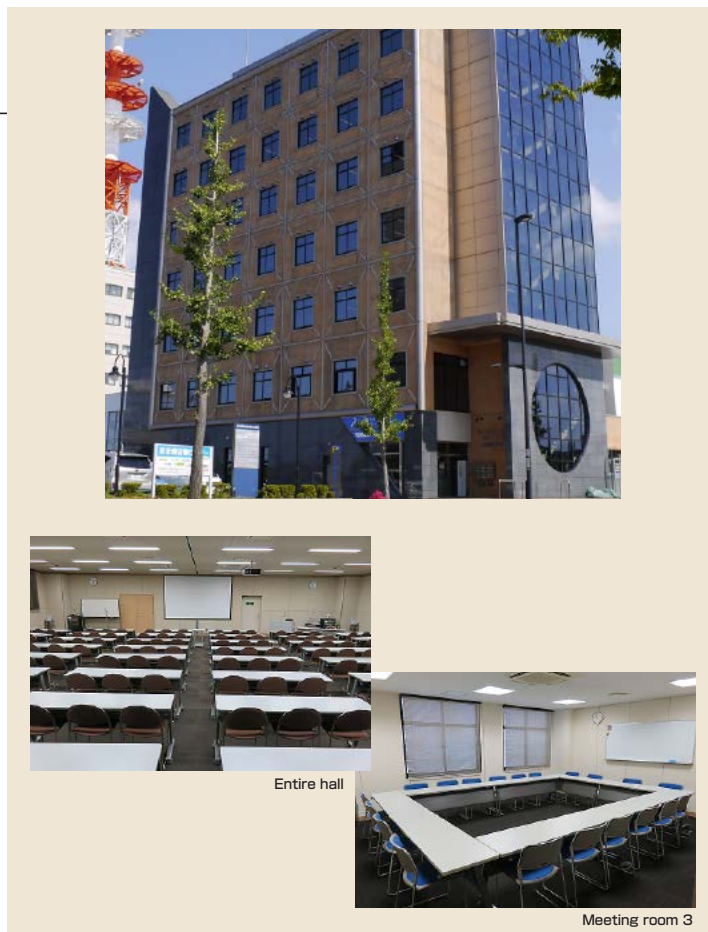


6 Ishikawa Prefecture Workers' Welfare and Culture Center

(Friend Park Ishikawa)

3-3-5 Sainen, Kanazawa 920-0024
 TEL: 076-234-2421 FAX: 076-231-1731
 URL: <https://ishikawa-rofukukyo.jp/friendpark/>



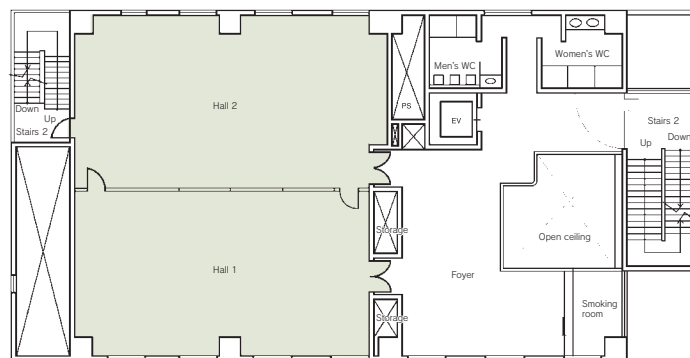
Entire hall



Meeting room 3

Floor plan

■ 2F



■ Number of seats
150 seats (Halls)



■ Traffic access
 5-min bus ride from JR Kanazawa Station
 (Get off at Ekinishi godochosha-mae and walk for 1 min.)
 5 min by taxi from JR Kanazawa Station



■ Hours
 9:00am~8:40pm

■ Date to start accepting reservation
 One year before the date of use



■ Accommodation
 None



■ Restaurants/Cafés
 None



■ Parking
20 vehicles (free)



■ Remarks
 Smoking room (2nd-floor)
 No need to set up the site and return it to its original state

■ Convention site

| Site name | Floor | Area (㎡) | Width×Depth (m) (m) | Ceiling height (m) | Capacity (persons) | | | | | Remarks |
|------------------------------|-------|----------|---------------------|--------------------|--------------------|--------|---------|--------|--------|------------------------------------|
| | | | | | Fixed seats | School | Theater | Seated | Buffet | |
| Entire hall | 2 | 198 | 15.0×13.2 | 3.0 | — | 144 | — | — | — | Chairs:190 Square shaped layout:60 |
| Hall 1 | 2 | 96 | 7.3×13.2 | 3.0 | — | 72 | — | — | — | Square shaped layout:48 |
| Hall 2 | 2 | 102 | 7.7×13.2 | 3.0 | — | 72 | — | — | — | Square shaped layout:48 |
| Meeting room 1 | 3 | 40 | 7.0× 5.7 | 2.5 | — | 20 | — | — | — | Square shaped layout:22 |
| Meeting room 2 | 4 | 69 | 9.5× 7.3 | 2.5 | — | 36 | — | — | — | Square shaped layout:36 |
| Meeting room 3 | 5 | 40 | 7.0× 5.7 | 2.5 | — | 20 | — | — | — | Square shaped layout:22 |
| Meeting room 4 (Round table) | 7 | 37 | 6.5× 5.7 | 2.5 | 14 | — | — | — | — | |
| | | | | | | | | | | |
| | | | | | | | | | | |
| | | | | | | | | | | |
| | | | | | | | | | | |

Width × Depth and the floor area may differ depending on the shape of the room.